

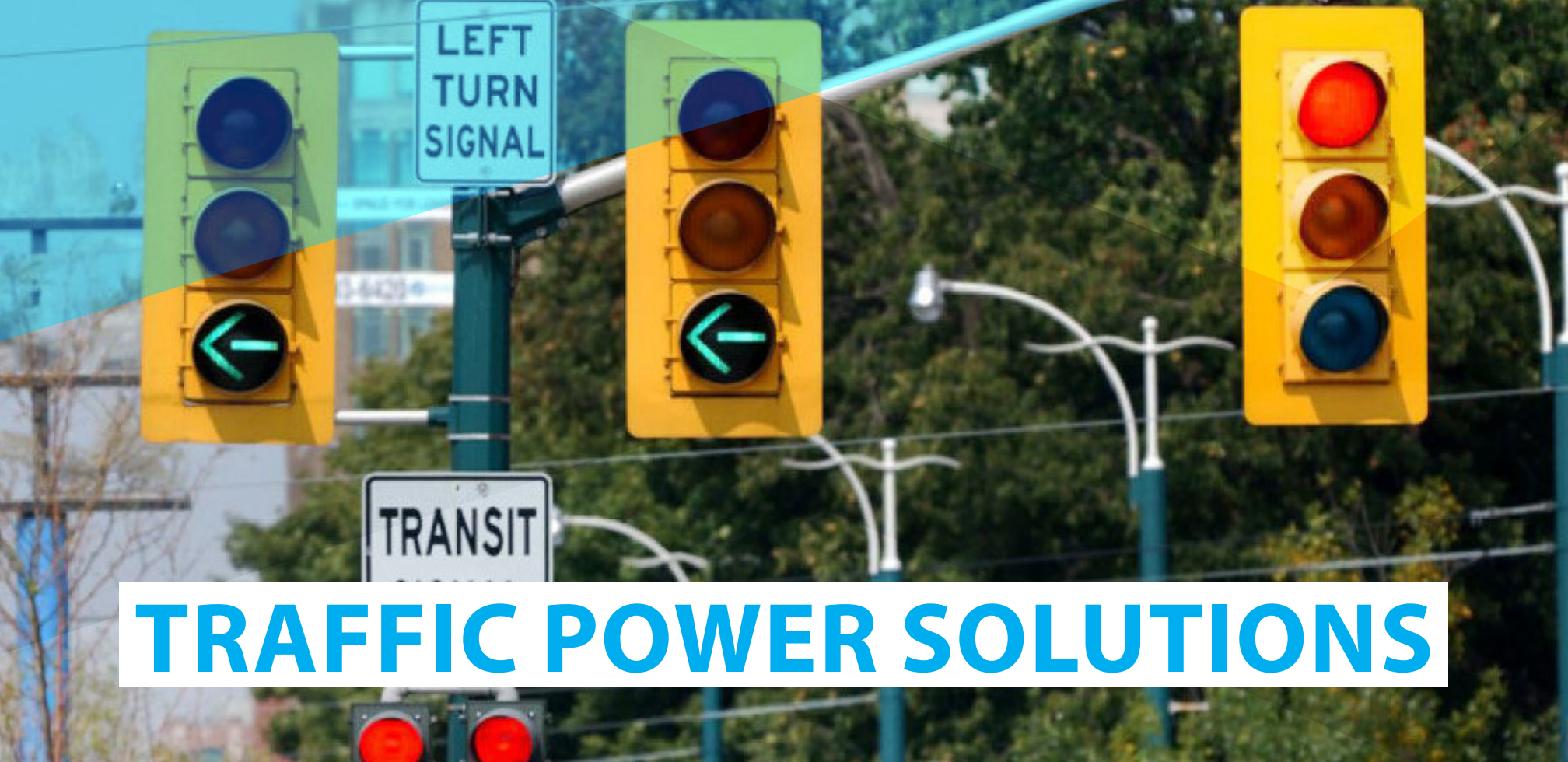


**Multilink**<sup>®</sup>  
Simply More...

# **DOT/ITS TODAY**

***LEADERS IN DOT/ITS INNOVATIONS***





# TRAFFIC POWER SOLUTIONS

LINE INTERACTIVE POWER SUPPLY .....	3
DOUBLE CONVERSION POWER SUPPLY .....	5
REMOTE POWER MANAGER .....	7
ACCESSORIES .....	8

## ***TRAFFIC POWER SOLUTIONS***

Multilink offers a complete set of Traffic Power Solutions which gives users the ability to efficiently manage resources as well as increase traffic control reliability. Our Line Interactive UPS provides filtered and regulated AC output power of proper voltage to operate traffic signals, conflict monitors, camera equipment and additional applications used in Departments of Transportation and Intelligent Traffic Systems (DOT/ITS). The Multilink Double Conversion UPS is an uninterruptible power supply designed to provide high

quality, stable AC power to critical equipment that requires continuous, regulated power. Our Remote Power Manager, the Smart Tracker Outlet Strip, is designed to provide 8 resettable outlets for any piece of equipment that may be attached to the Smart Tracker. Finally, we have a line of high-quality DOT/ITS Accessories that range from our Standard Transfer Switch to our Smart Tracker.

# LINE INTERACTIVE POWER SUPPLY

## EP1100



- UL1778
- UL60950-1
- CSA C22.2 No.107.1
- NEMA TS2

1100W output capacity. 120VAC/60Hz AC input. 120VAC/60Hz AC output. 48VDC with 10A charger. Automatic voltage regulation with Buck/Boost. Uses 4, 12V batteries to provide backup power to DOT/ITS equipment. Includes Ethernet network card, temperature probe and user manual.

## GENERAL SPECIFICATIONS

Dimensions	17" x 5.25" x 10.8"
Output Power	1100W
Voltage Range	85 - 175VAC
Frequency	60/50Hz $\pm$ 5% (auto detection)
Battery Voltage	48VDC

## EP2200-T



- UL1778
- UL60950-1
- CSA C22.2 No.107.1
- NEMA TS2

2000VA output capacity. 120VAC/60Hz AC input. 120VAC/60Hz AC output. 48 VDC battery system with 10A charger. Automatic voltage regulation with Buck/Boost. Uses 4, 12V batteries to provide backup power to DOT/ITS equipment. Includes temperature probe and user manual.

## GENERAL SPECIFICATIONS

Dimensions	17" x 5.24" x 10"
Output Power	1,500W/2kVA
Voltage Range	90V - 150V
Frequency	60Hz
Battery Voltage	48VDC

# LINE INTERACTIVE POWER SUPPLY



## EP650

- UL1778
- UL60950-1
- CSA C22.2 No.107.3
- NEMA TS2

650W output capacity. 120VAC/60Hz AC input. 120VAC/60Hz AC output. 24 VDC battery system with 10A charger. Automatic voltage regulation with Buck/Boost. Uses 2, 12V batteries to provide backup power to DOT/ITS equipment. Includes Ethernet network card, temperature probe and user manual.

## GENERAL SPECIFICATIONS

Dimensions	17" x 3.5" x 9"
Output Power	650W
Voltage Range	85 - 175VAC
Frequency	60/50Hz $\pm$ 5% (auto detection)
Battery Voltage	24VDC



# DOUBLE CONVERSION POWER SUPPLY



## EDP 1000

- UL1778
- UL60950-1
- CSA C22.2 No.107.3

1000VA output capacity. 120VAC/60Hz AC input. 120VAC/60Hz AC output. 24 VDC battery system. Uses 2, 12V batteries to provide backup power to DOT/ITS equipment. Includes Ethernet network card, temperature probe and user manual.

## GENERAL SPECIFICATIONS

Dimensions	17.25" x 3.485" x 13.625"
Output Power	700W
Voltage Range	55V - 155V (load dependent)
Frequency	60Hz
Battery Voltage	24VDC



## EDP 1500

- UL1778
- UL60950-1
- CSA C22.2 No.107.3

1500VA output capacity. 120VAC/60Hz AC input. 120VAC/60Hz AC output. 36 VDC battery system. Uses 3, 12V batteries to provide backup power to DOT/ITS equipment. Includes Ethernet network card, temperature probe and user manual.

## GENERAL SPECIFICATIONS

Dimensions	17.25" x 5.25" x 13.625"
Output Power	1100W
Voltage Range	55V - 155V (load dependent)
Frequency	60Hz
Battery Voltage	36VDC



# DOUBLE CONVERSION POWER SUPPLY



## EDP 2000

- UL1778
- UL60950-1
- CSA C22.2 No.107.3

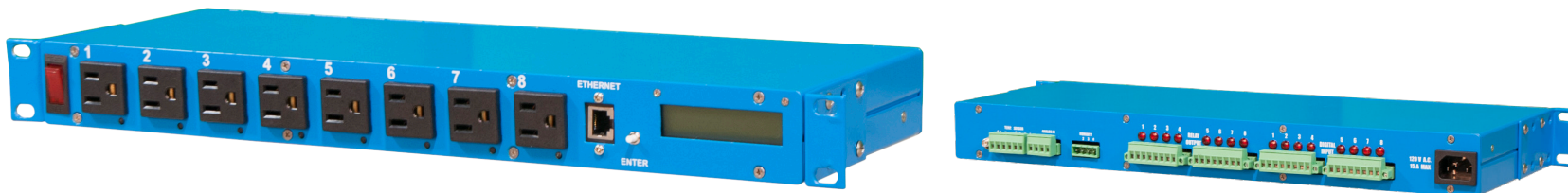
2000VA output capacity. 120VAC/60Hz AC input. 120VAC/60Hz AC output. 48 VDC battery system. Uses 4, 12V batteries to provide backup power to DOT/ITS equipment. Includes Ethernet network card, temperature probe and user manual.

## GENERAL SPECIFICATIONS

Dimensions	17.25" x 5.25" x 13.625"
Output Power	1400W
Voltage Range	55V - 155V (load dependent)
Frequency	60Hz
Battery Voltage	48VDC



# REMOTE POWER MANAGER



## SMART TRACKER

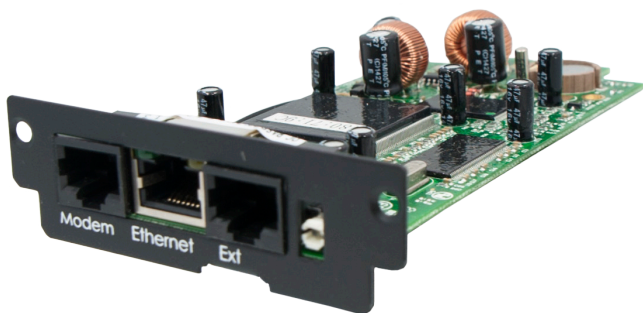
- NEMA TS2

120VAC/60Hz input. 8 independent 5-15 outlets that can be turned on or off manually or with a schedule. 8 input relays and 8 output relays. IP ready, GPS locator, LCD screen, email and SNMPv3 notifications. Includes AC power cord, adjustable rack mount brackets, GPS antenna and user manual.

## GENERAL SPECIFICATIONS

Dimensions	19" x 1.7" x 7"
Output Power	1,800W
Voltage	85 - 154VAC
Frequency	60Hz
Protocols	HTTPS, TCP/IP, SNMP, SMTP, SNTP, Telnet, UDP, NTCIP, FTP, SSH





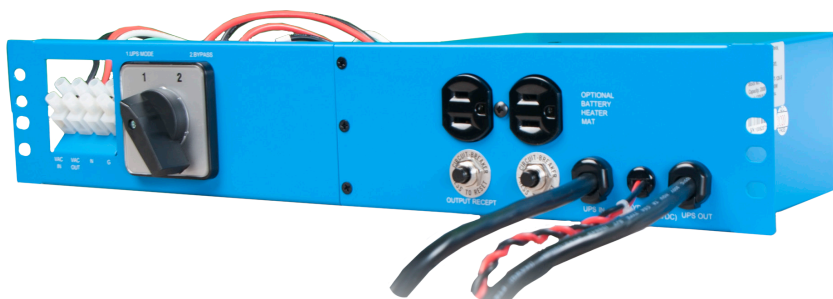
## EMBEDDED ETHERNET CARD

- NEMA TS2

Embedded network card for EP2200-T. Web page interface to allow monitoring and configuration of UPS remotely. SNMP and email notifications are available. NTCIP compliant.

### GENERAL SPECIFICATIONS

<b>Mounting</b>	Embedded
<b>Network Interface</b>	10/100 Base T with Auto-Detect
<b>Compatible Browsers</b>	Chrome, Safari, Internet Explorer, FireFox
<b>Protocols</b>	TCP/IP, HTTP, SNMP, SNT, SMTP, NTCIP, FTP, UDP, Telnet, SSH, TFTP



## POWER TRANSFER DEVICE

- UL 1778
- UL 60950-1
- CSA-107.1

Manual bypass switch (panel transfer device) that is compatible with the EP2200-T. Allows for maintenance to be done on UPS and batteries without loss of power to the load.

### GENERAL SPECIFICATIONS

<b>Dimensions</b>	19" x 3.5" x 6"
<b>Voltage Range</b>	90~150VAC
<b>Frequency</b>	60Hz
<b>Current Capacity</b>	30A
<b>Outlet</b>	5-15 Duplex





## SAFETY AUTOMATIC TRANSFER SWITCH

- UL60959-1

The Safety Automatic Transfer Switch pairs with the EDP series and line interactive UPS models. It provides automatic power source selection, generator capabilities and alarm reporting via dry contact relays. Includes maintenance bypass switch.

### GENERAL SPECIFICATIONS

<b>Dimensions</b>	19" x 3.5" x 10"
<b>Outlet</b>	5-20P Duplex (6A max)
<b>Voltage</b>	120V Nominal
<b>Frequency</b>	60Hz
<b>Output Power</b>	2,000W



## STANDARD TRANSFER SWITCH

- UL60950-1

The Safety Automatic Transfer Switch pairs with the EDP series and line interactive UPS models. It provides automatic power source selection and alarm reporting via dry contact relays. Includes maintenance bypass switch.

### GENERAL SPECIFICATIONS

<b>Dimensions</b>	19" x 3.5" x 5.5"
<b>Outlet</b>	5-20P Duplex (6A max)
<b>Voltage</b>	120V Nominal
<b>Frequency</b>	60Hz
<b>Output Power</b>	2,000W

## STANDARD TRANSFER SWITCH

- UL60950-1

The Standard Transfer Switch pairs with the EDP series and line interactive UPS models. It provides power source selection, generator capabilities and alarm reporting via dry contact relays. Includes maintenance bypass switch.



### GENERAL SPECIFICATIONS

Dimensions	7" x 7" x 3.5"
Voltage	120V Nominal
Frequency	60Hz
Output Power	2,000W
Mounting	Door, Wall

## CAMERA CONTROL INTERFACE

Provides integrated functionality in powering and controlling a video camera at remote locations. Controlled using joystick or remotely using R2-232/485

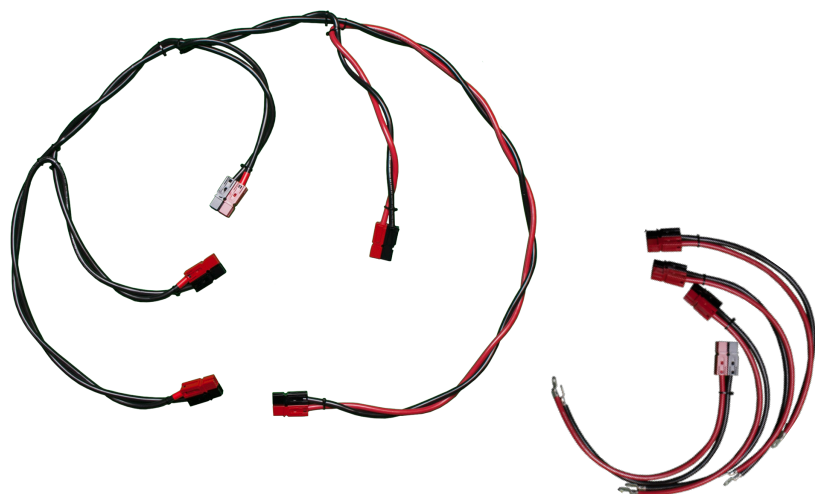


### GENERAL SPECIFICATIONS

Dimensions	9" x 3.5" x 9.5"
Output Voltage	24VAC, 4amp max
Voltage Range	105 - 125V
Protocols	RS 232/485



## BATTERY HARNESSES

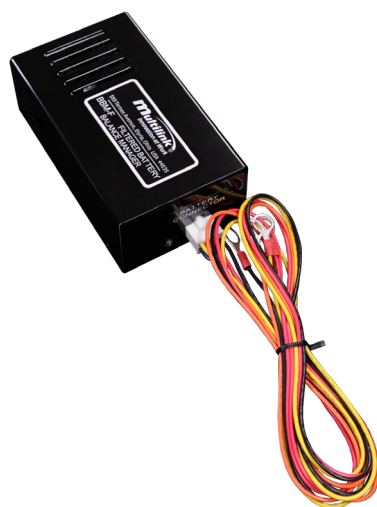


Battery wiring kit with main harness and interconnecting harnesses. Used to connect 12V batteries in series to provide power to the UPS. Each kit utilizes Anderson Powerpole connectors. Includes hardware and wiring diagram.

### COMPATIBILITY GUIDE

EP 2200-T	870-230-10
EP650	870-230-40
EDP 1000	870-230-20
EDP1500	870-230-30
EDP 2000	870-230-10

## BATTERY BALANCER



External Battery Balance Manager Plus. 24VDC, 36VDC or 48VDC model used to automatically balance 12V batteries to extend battery life. Includes harness and instructions.

### COMPATIBILITY GUIDE

EP 2200-T	018-009-20
EP650	018-020-20
EDP 1000	018-020-20
EDP1500	018-008-20
EDP 2000	018-009-20

## AGM BATTERY



### GENERAL SPECIFICATIONS

Voltage	12V
Group	31
AMP Hours	108Ahr

### BATTERY CHART

EP1100	3
EP2200-T	4
EP650	2
EDP 1000	2
EDP 1500	3
EDP 2000	4



## BATTERY TERMINAL COVERS



Pair of covers, 1 red and 1 black, that slide over battery harness ends.

### GENERAL SPECIFICATIONS

Terminal Covers	2
Color	(1) Black (1) Red

## TEMPERATURE PROBE



Used with EDP series to provide temperature compensation for the battery charger to properly adjust for temperature rise or fall.

### GENERAL SPECIFICATIONS

Connector	RJ45
Length	10ft.



## **BATTERY HEATER MAT**

The battery heater mat can be used for 2 batteries per shelf and includes a thermostat with thermal cutoff.

### **COMPATIBILITY GUIDE**

<b>Dimensions</b>	13" x 14"
<b>Battery Capacity</b>	2
<b>Thermostat</b>	Yes (includes thermal cutoff)
<b>Power Cord</b>	AC





# DOT / ITS CABINETS

332/334 CABINET.....	18
336 CABINET.....	19
336S CABINET.....	20
336 MINI CABINET .....	21

FLASHER-STYLE ENCLOSURE .....	23
ACCESSORIES .....	26

## ***DOT / ITS CABINETS***

Multilink designs and manufactures a complete line of products for the in Departments of Transportation and Intelligent Traffic Systems (DOT/ITS) industry. Our 332L Traffic Control Cabinet is designed to meet NEMA 3R specifications as well as the industry standard 170/2070 style cabinet specifications. Our 336S Traffic Control Cabinet has been evaluated to GDOT specifications and placed on the Georgia Department of Transportation's Approved

Product List (APL). Our Flasher-Style Cabinets are single door enclosures that are designed to work within the DOT Market Applications. Our NEMA 3 UPS Enclosures are single door enclosures that house numerous electronic components including DOT controls, terminals, and instruments. Finally, our collection of DOT Accessories ranges from Power Panels to Removable Rack Assemblies.



# LIFESAVER™ ROOF



# LOADED CABINET



# LIFESAVER™ ROOF

The LifeSaver Roof provides superior cooling capabilities for your electronic network equipment located inside the cabinet.

Life Saver Temp.  
6 hr - 131.0°F

Life Saver Temp.  
3 hr - 123.2°F

Life Saver Temp.  
1 hr - 97.3°F

Stove Top Shielded Temp.  
6 hr - 157.2°F

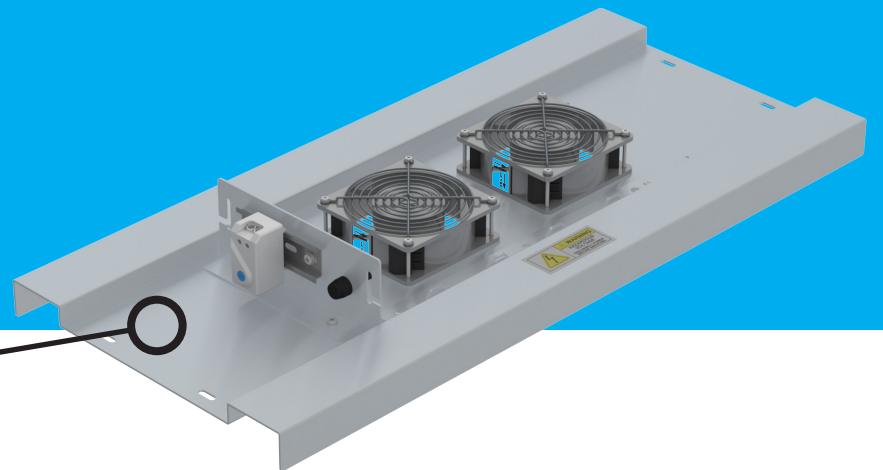
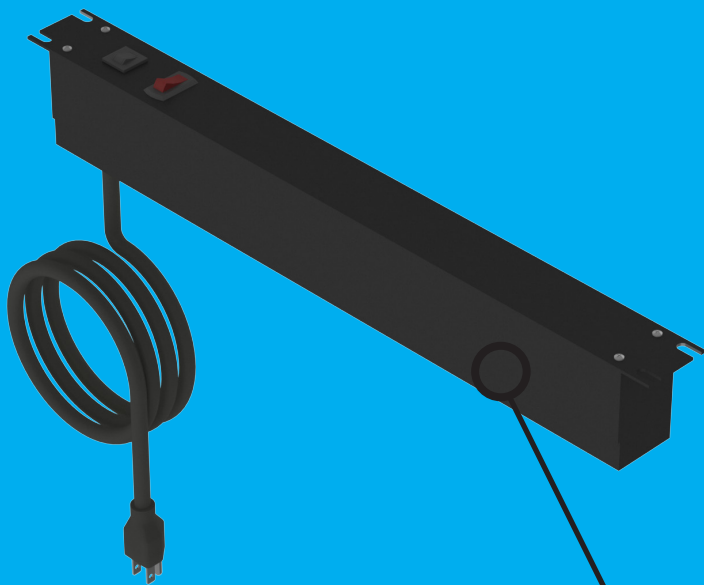
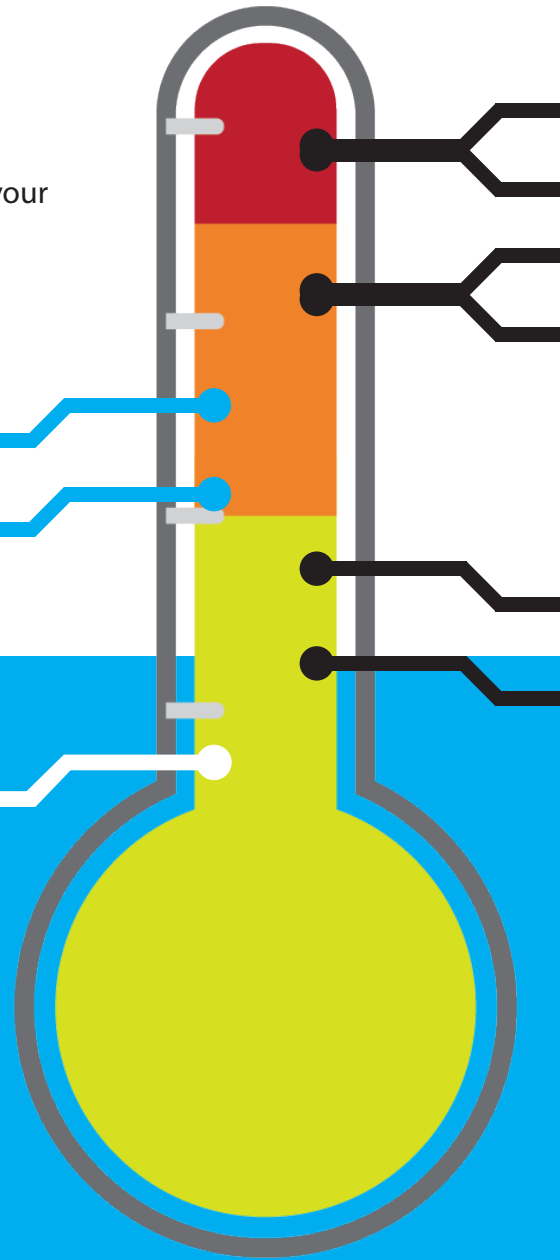
Stove Top Unshielded Temp.  
6 hr - 156.7°F

Stove Top Unshielded Temp.  
3 hr - 148.2°F

Stove Top Shielded Temp.  
3 hr - 147.3°F

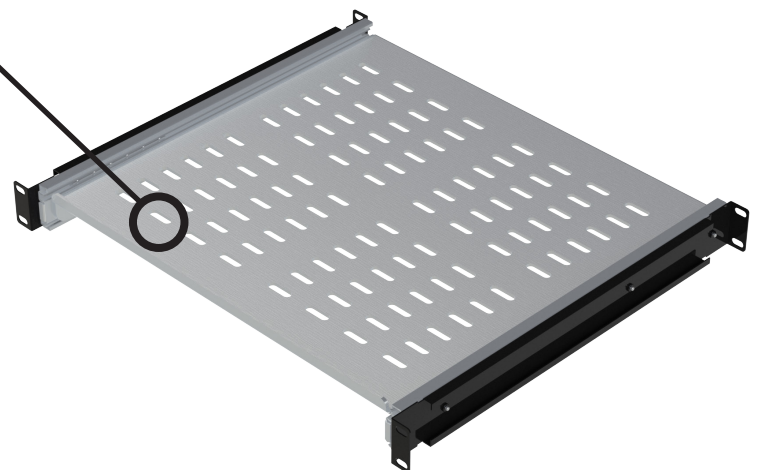
Stove Top Chimney Temp.  
1 hr - 117.5°F

Stove Top Unshielded Temp.  
1 hr - 111.9°F



# LOADED CABINETS

Bundle your cabinet with all of your electronic equipment needs. Multilink® manufactures a full lineup of equipment and cabinets to help you bundle and save on cost.



# 332/334 CABINET



## 332/334 CABINET

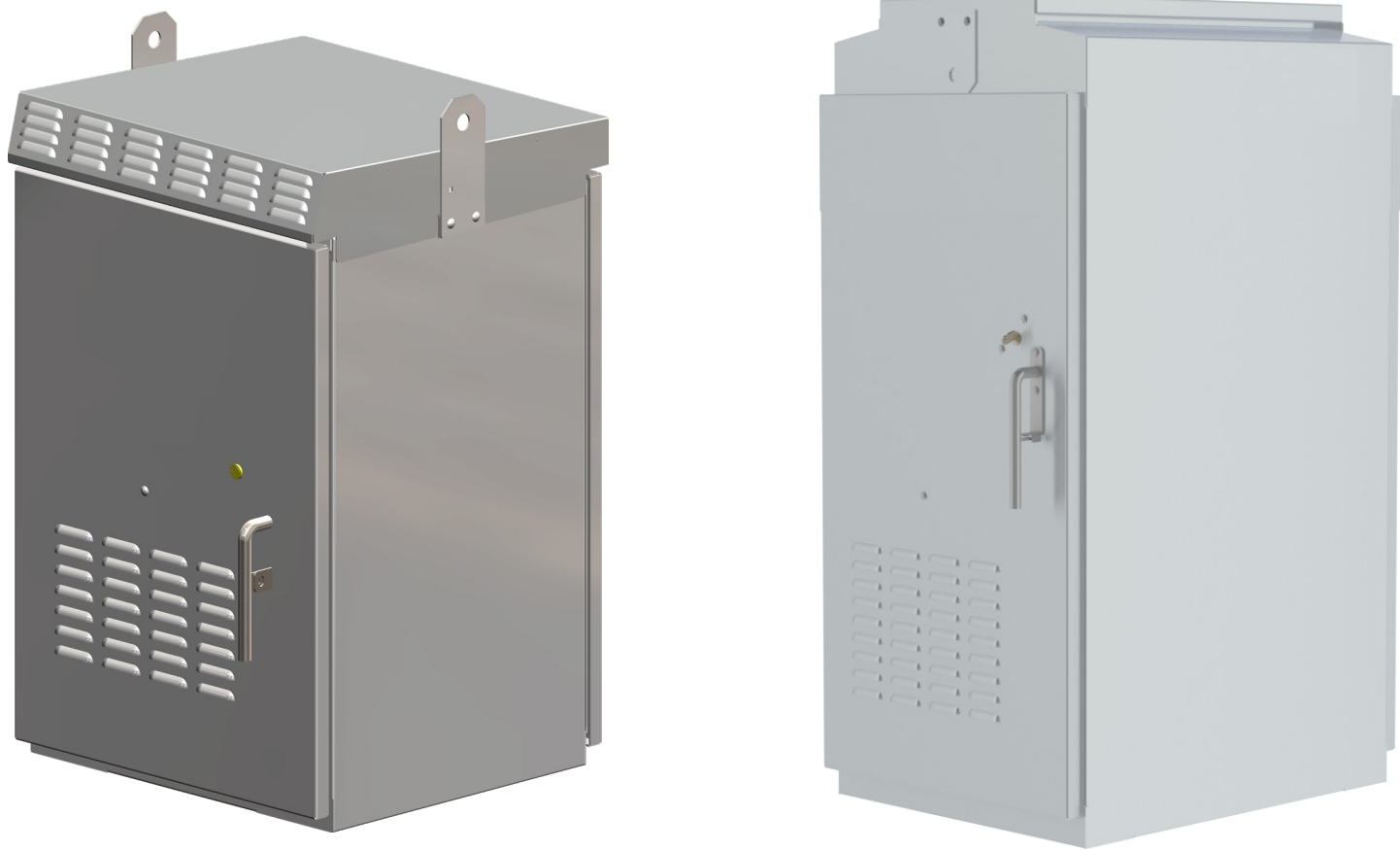
- Type 1 & Type 3R
- UL 50E
- UL 508A

The standard, basic cabinet, provides normal every day network housing. Available in both a standard stove top version or LifeSaver™ version. The 332 is a traffic control cabinet that meets NEMA 3R specifications. Also designed to meet the industry standard 170/2070 style cabinet specifications. This cabinet can house 170 or 2070 controllers and other traffic equipment required for controlling intersections. Cabinet is equipped with removable 19" EIA rack assembly. Front and rear doors are secured by a 3-point latch mechanism along with weather resistant gasketing.

### GENERAL SPECIFICATIONS

<b>Dimensions</b>	66" x 24" x 30"
<b>Material</b>	1/8" Aluminum
<b>Finish</b>	Bare
<b>Police Door</b>	Available
<b>Latch</b>	3 Point Latch

# 336 CABINET



## 336 CABINET

The 336 cabinet is a traffic control cabinet that meets NEMA 3R specifications. This cabinet provides a bigger footprint for superior network housing room. It is designed to meet the DOT cabinet standard specifications. This cabinet can house all vital intersection electronic equipment that manages traffic flow and assures safety for all roadway users. Available in either a standard stove top roof or LifeSaver™ roof.

### GENERAL SPECIFICATIONS

<b>Dimensions</b>	48" x 24" x 23"
<b>Material</b>	1/8" Aluminum
<b>Finish</b>	Bare
<b>Latch</b>	3 Point Latch



# 336S CABINET



## 336S CABINET

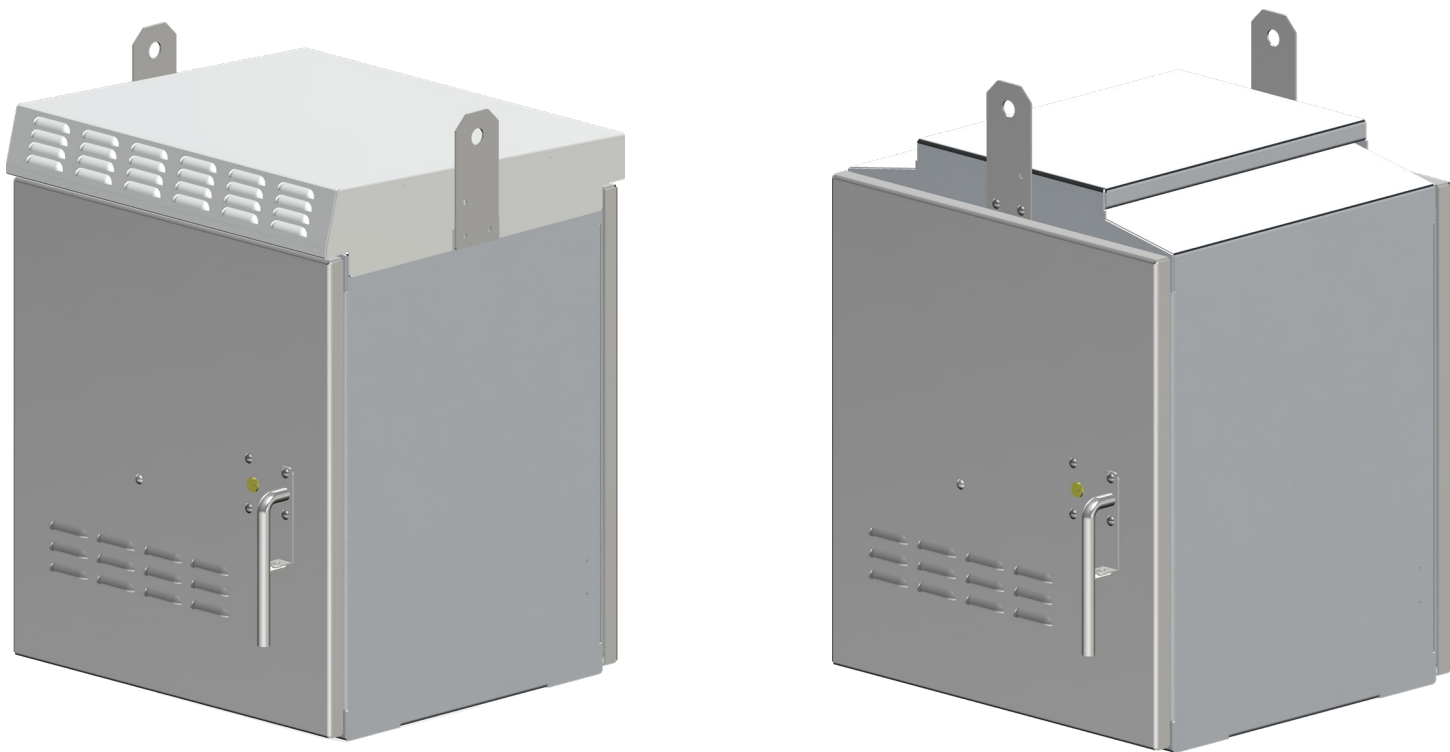
- NEMA 3R
- UL 50E
- UL 50
- FDOT Approved

The tallest of the 336 lineup, the 336S offers additional rack space for your network equipment. The 336S cabinet is a traffic control cabinet that meets NEMA 3R specifications. It is designed to meet the DOT cabinet standard specifications. This cabinet can house all vital intersection electronic equipment that manages traffic flow and assures safety for all roadway users. The S version has a smaller profile than the base 336 Cabinet. Available in either a standard stove top roof or LifeSaver™ roof.

## GENERAL SPECIFICATIONS

<b>Dimensions</b>	24" x 48" x 23"
<b>Material</b>	1/8" Aluminum
<b>Finish</b>	Bare
<b>Latch</b>	3 Point Latch

# 336 MINI CABINET



## 336 MINI CABINET

The 336 Mini cabinet is a traffic control cabinet that meets NEMA 3R specifications. This cabinet provides a small footprint for network housing room. It is designed to meet the DOT cabinet standard specifications. This cabinet can house all vital intersection electronic equipment that manages traffic flow and assures safety for all roadway users. The 336 Mini is a compact version of the 336 cabinet, better suited for smaller areas. Available in either a standard stove top roof or LifeSaver™ roof.

### GENERAL SPECIFICATIONS

<b>Dimensions</b>	26" x 32" x 23"
<b>Material</b>	1/8" Aluminum
<b>Finish</b>	Bare
<b>Latch</b>	3 Point Latch

# CABINET COMPATIBILITY CHART

## CABINET COMPATIBILITY CHART

	332/334	336	336S	336 MINI
<b>ROOF</b>				
Stove Top Roof	Standard	Standard	Standard	Standard
LifeSaver™ Roof	Available	Available	Available	Available
Sun Shields	Available	Available	Available	Available
<b>RACK ASSEMBLY</b>				
Removable Rack Assembly	Standard	Standard	Standard	Standard
<b>FANS</b>				
Fan Kit	Available	Available	Available	Available
<b>EQUIPMENT TRAYS</b>				
1RU Sliding Drawer	Available	Available	Available	Available
1RU Sliding Shelf	Available	Available	Available	Available
1RU Vented Tray	Available	Available	Available	Available
<b>LIGHTS</b>				
LED Light Kit	Available	Available	Available	Available
Fluorescent	Available	Available	Available	Available
<b>RECEPTACLES</b>				
Smart Tracker	Available	Available	Available	Available
Power Strip	Available	Available	Available	Available
PDU	Available	Available	Available	Available
Power Panel	Available	Available	Available	Available
<b>LOCKS</b>				
Standard Lock	Standard	Standard	Standard	Standard
State Specific Lock	Available	Available	Available	Available
Smart Key	Available	Available	Available	Available
<b>OTHER</b>				
Generator Switch	N/A	N/A	Available	N/A
Police Door	Available	N/A	N/A	N/A

# FLASHER-STYLE ENCLOSURE



## RN1H TRAFFIC CABINET

- NEMA3

A rough neck single hinge box that can be tailored for DOT applications.

### GENERAL SPECIFICATIONS

<b>Dimensions</b>	16" x 19" x 12"
<b>Material</b>	1/8" Aluminum
<b>Finish</b>	Bare
<b>Security</b>	Corbin Lock, Single Point
<b>Grounding</b>	Ground Lug



## TYPE II FLASHER TRAFFIC CABINET

- NEMA3

A Type 2 flasher traffic cabinet that can be customized with internal recepticals and additional accessories for each unique applications needs.

### GENERAL SPECIFICATIONS

<b>Dimensions</b>	15.25" x 27" x 12"
<b>Material</b>	1/8" Aluminum
<b>Finish</b>	Bare
<b>Cable Entrance</b>	2" knockouts on bottom of enclosure
<b>Grounding</b>	Ground Lug



# FLASHER-STYLE ENCLOSURE



## RN1H TRAFFIC CABINET

- NEMA3

A rough neck single hinge box that can be tailored for DOT applications. Providing interchangeable backs depending on your specific needs.

### GENERAL SPECIFICATIONS

<b>Dimensions</b>	18" x 24" x 8"
<b>Material</b>	1/8" Aluminum
<b>Finish</b>	Bare
<b>Security</b>	Corbin #2 Lock, Single Point
<b>Grounding</b>	Ground Lug



## RN1H TRAFFIC CABINET

A single hinged traffic cabinet with front ventilation pocket, cooling fans, 19" rack rails and a duplex outlet.

### GENERAL SPECIFICATIONS

<b>Dimensions</b>	33" x 21" x 18"
<b>Material</b>	1/8" Aluminum
<b>Rack Rails</b>	Yes, 19" Standard
<b>Security</b>	Corbin #2 Lock
<b>Cable Entrance</b>	3" knockout on base

# FLASHER-STYLE ENCLOSURE

## RN1H TRAFFIC CABINET



A single hinged traffic cabinet with front ventilation pocket

### GENERAL SPECIFICATIONS

<b>Dimensions</b>	33" x 21" x 18"
<b>Material</b>	1/8" Aluminum
<b>Security</b>	Corbin #2 Lock
<b>Cable Entrance</b>	2" knockout on base

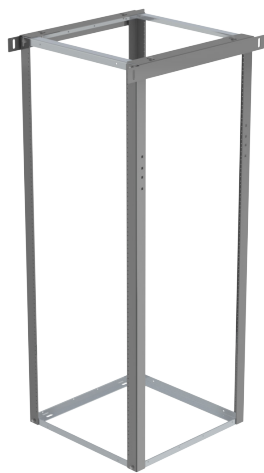


## **REMOVABLE RACK ASSEMBLY**

The removable rack assembly is a standard feature on all cabinets, providing flexibility for network equipment placement.

### **GENERAL SPECIFICATIONS**

<b>Material</b>	Stainless Steel
<b>Rack</b>	19" Standard Rails



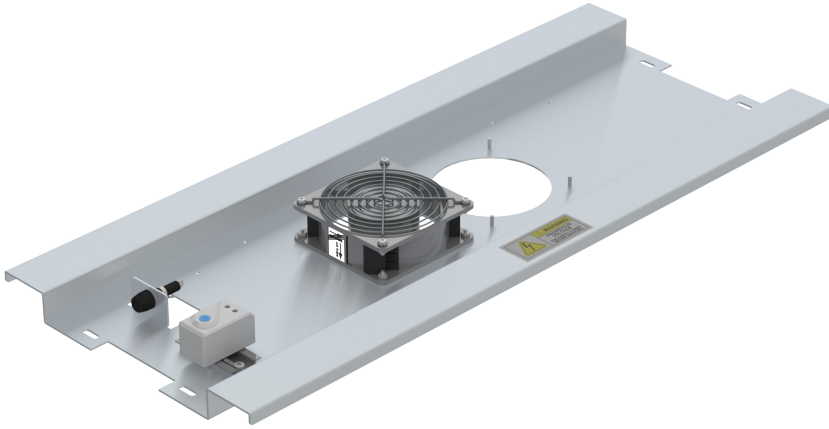
## **REMOVABLE RACK ASSEMBLY**

The removable rack assembly is a standard feature on all cabinets, providing flexibility for network equipment placement.

### **GENERAL SPECIFICATIONS**

<b>Material</b>	Stainless Steel
<b>Rack</b>	19" Standard Rails

## FAN KIT

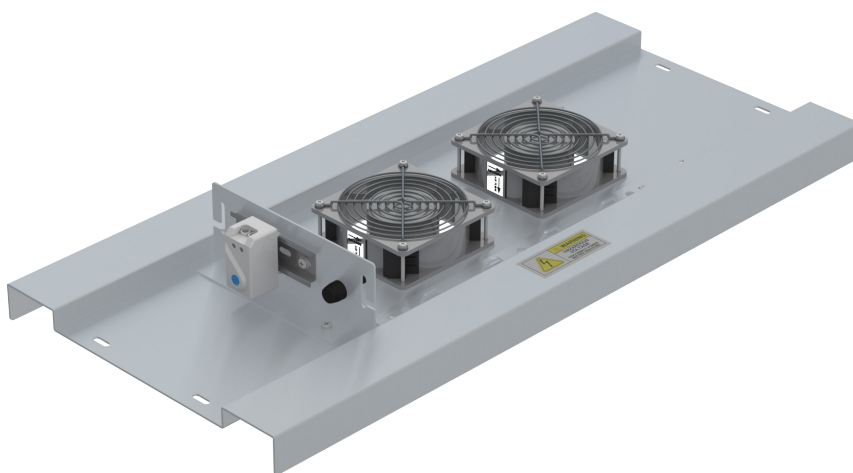


Fan kits provide greater heat dissipation for the cabinet. Allowing your electronics to stay cool in most environments.

### GENERAL SPECIFICATIONS

<b>Fans</b>	(1) 100 CFM
<b>Thermostat</b>	Yes
<b>Cabinet Compatibility</b>	All Chimney Roof Cabinets

## FAN KIT



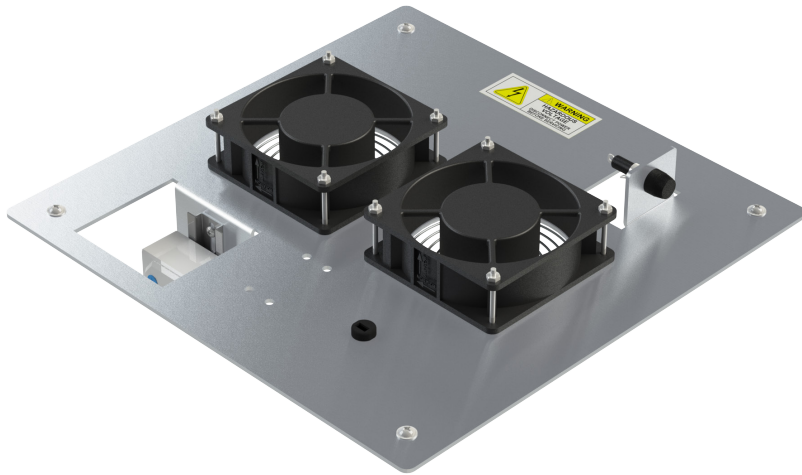
The dual fan kit provides greater heat dissipation for the cabinet. Allowing your electronics to stay cool in most environments.

### GENERAL SPECIFICATIONS

<b>Fans</b>	(2) 100 CFM
<b>Thermostat</b>	Yes
<b>Cabinet Compatibility</b>	All Chimney Roof Cabinets



## FAN KIT

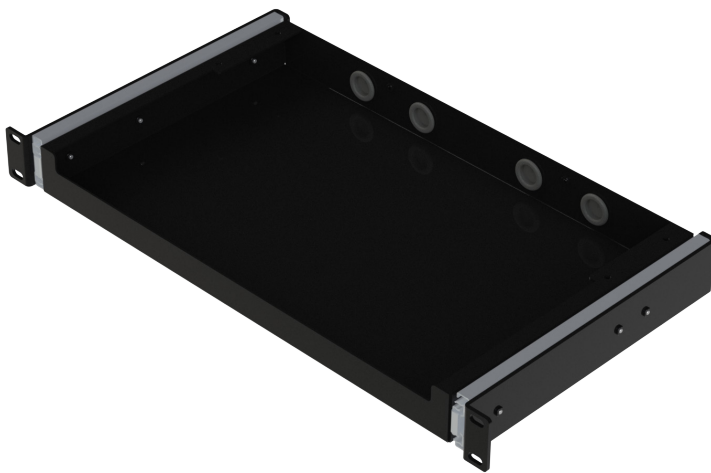


The dual fan kit provides greater heat dissipation for the cabinet. Allowing your electronics to stay cool in most environments. Designed to fit it LifeSaver™ Roof cabinet styles.

### GENERAL SPECIFICATIONS

<b>Fans</b>	(2) 100 CFM
<b>Thermostat</b>	Yes
<b>Cabinet Compatibility</b>	All LifeSaver™ Roof Cabinets

## 1RU SLIDING DRAWER



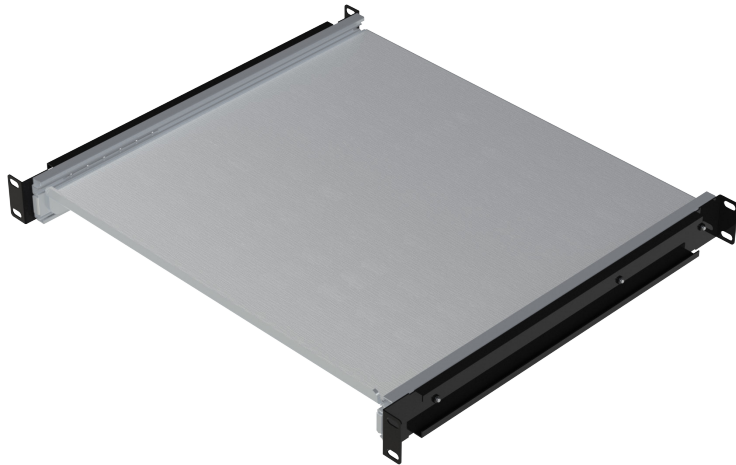
A convenient sliding drawer for network equipment that can be mounted anywhere on the rail cage.

### GENERAL SPECIFICATIONS

<b>Dimensions</b>	Standard 19"
<b>RU Size</b>	1RU
<b>Sliding</b>	Yes
<b>Lid</b>	Yes
<b>Vented</b>	No

## 1RU SLIDING SHELF

A convenient sliding shelf for network equipment that can be mounted anywhere on the rail cage.

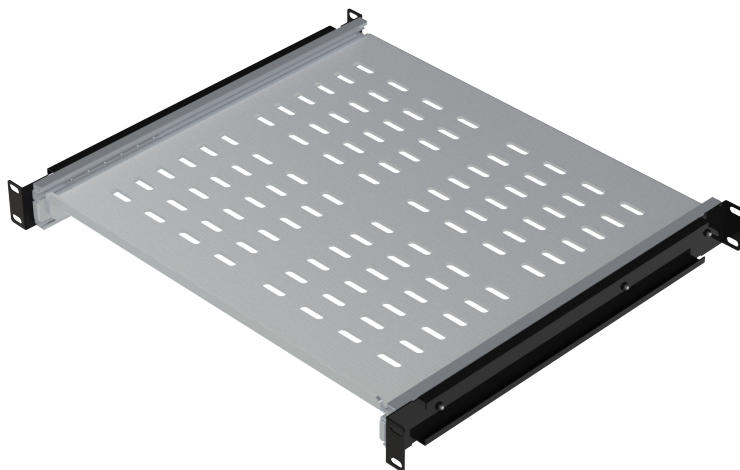


### GENERAL SPECIFICATIONS

<b>Dimensions</b>	Standard 19"
<b>RU Size</b>	1RU
<b>Sliding</b>	Yes
<b>Lid</b>	No
<b>Vented</b>	No

## 1RU VENTED TRAY

Mounted anywhere on the rail cage, the vented laptop tray provides ample working space for your network maintenance while providing sufficient airflow to your equipment.

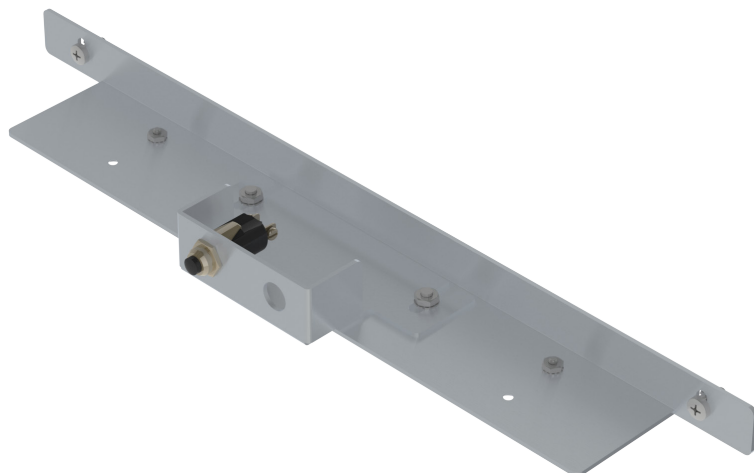


### GENERAL SPECIFICATIONS

<b>Dimensions</b>	Standard 19"
<b>RU Size</b>	1RU
<b>Sliding</b>	Yes
<b>Vented</b>	Yes

## LED LIGHT KIT

LED light kits provide superior lighting when low visibility working environments make it tough.

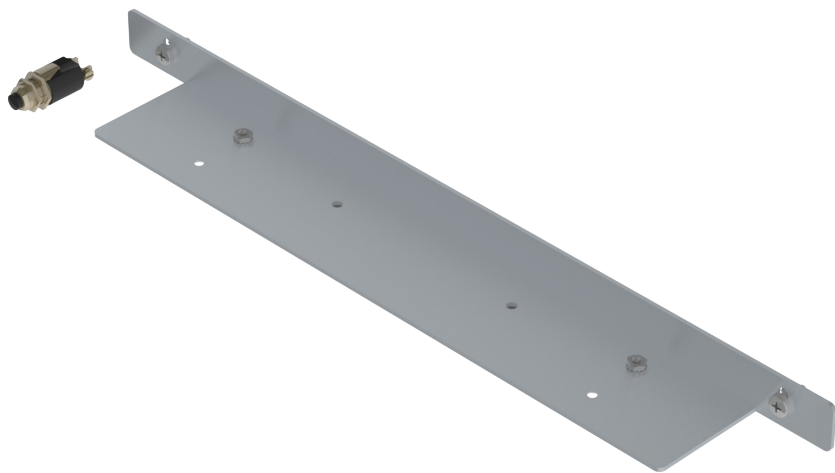


### GENERAL SPECIFICATIONS

<b>Bulb Type</b>	LED
<b>Bulb Temperature</b>	4200K
<b>Watts</b>	60W
<b>Cabinet Compatibility</b>	336S Cabinet

## LED LIGHT KIT

LED light kits provide superior lighting when low visibility working environments make it tough.



### GENERAL SPECIFICATIONS

<b>Bulb Type</b>	LED
<b>Bulb Temperature</b>	4200K
<b>Watts</b>	60W
<b>Cabinet Compatibility</b>	332 Cabinet



## POWER STRIP

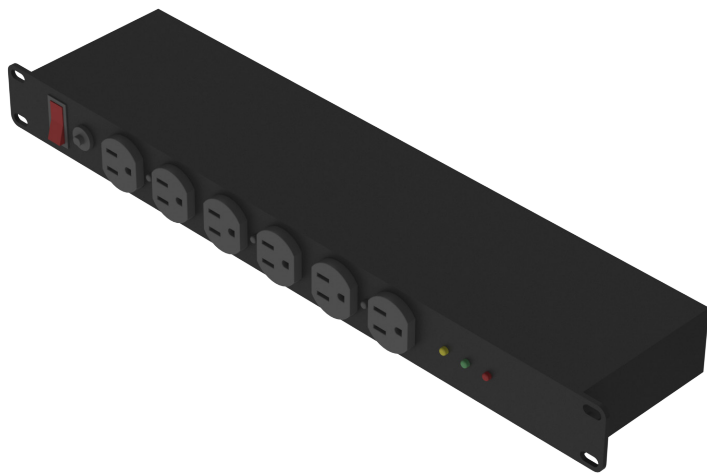


An 8 outlet power strip provides power to your equipment and can be mounted anywhere on the rail cage.

### GENERAL SPECIFICATIONS

Outlets	8
Volts	120V
Plug	5-15P
Cord Length	6ft.
RU Size	1RU

## PDU

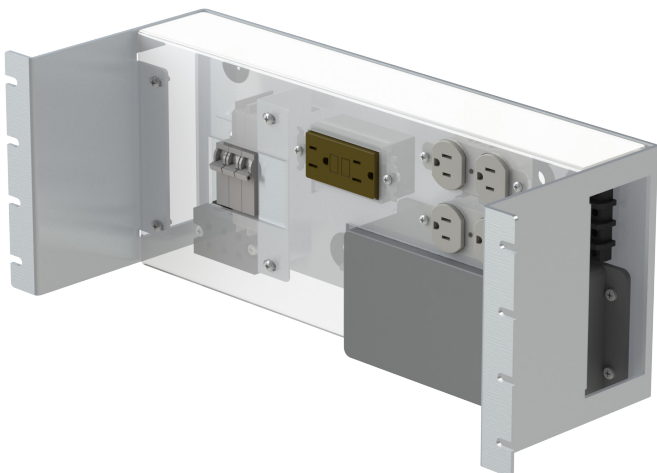


Each PDU provides outlets capable of providing power to your electronic cabinet equipment. The PDU has an integrated ON/OFF toggle and power indicator lights.

### GENERAL SPECIFICATIONS

Outlets	5-15
Amps	15A
RU Size	1RU

## POWER PANEL

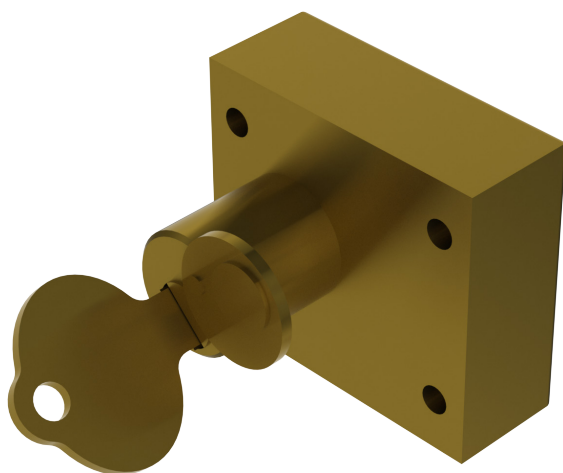


Interfaces with main utility power to power the cabinet and additional equipment in a compact rack mount solution.

### GENERAL SPECIFICATIONS

<b>Circuit Breakers</b>	(2) 15A, (1) 30A
<b>Outlets</b>	(1) GFCI 20A, (1) 5-15 Duplex 15A
<b>Mounting</b>	19" Rack Mount
<b>Wiring</b>	22AWG - 1AWG

## STANDARD LOCK

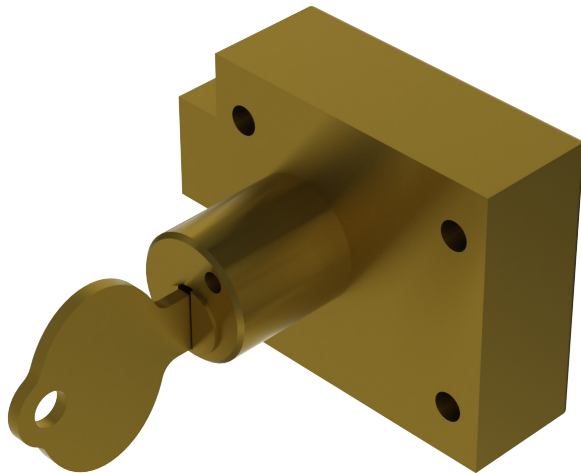


A standard lock on our DOT/ITS cabinets provides good, utilizing a physical key entry.

### GENERAL SPECIFICATIONS

<b>Security</b>	Physical Key
<b>Material</b>	Hardened Steel

## STATE SPECIFIC LOCK



The state specific locks on our DOT/ITS cabinets meet the DOT specifications required for each individual state. Each cabinet can be configured with a state specific lock.

### GENERAL SPECIFICATIONS

<b>Security</b>	Physical Key
<b>Material</b>	Hardened Steel

## SMART KEY



This convenient system brings real-time access control in a single-card system to individual cabinet doors, greatly improving the monitoring and security level of each cabinet. This smart key utilizes existing ID badges so there are no keys to control or replace and no codes to secure or remember. The KS100 protects cabinets from malicious or accidental tampering without adding a credential.

### GENERAL SPECIFICATIONS

<b>Operating Temperature</b>	32° to 122° F, 0° to 50° C
<b>Power</b>	PoE hardwired via standard IEEE 802.3af
<b>Security</b>	Fully encrypted AES 128 bit wireless communication



## GENERATOR SWITCH

Our generator switches are welded to the outside of the cabinet, providing an external access. \*only available on 336S Cabinet. Provides an LED light holder and various transfer switch holder brackets.



### GENERAL SPECIFICATIONS

<b>Dimensions</b>	10" x 10" x 6"
<b>Material</b>	1/8" Aluminum
<b>Finish</b>	Bare



# EDGE LIT ILLUMINATED SIGNS

EDGE LIT ILLUMINATED SIGNS .....36

## ***EDGE LIT ILLUMINATED SIGNS***

Multilink offers an Edge Lit LED Illuminated Street Sign Series designed for use in outdoor environments. These signs enhance motorist's visibility and awareness while adding a sleek look to city streets. The Illuminated Street Signs also enhance pedestrian's visibility, bringing a new sense of simplicity to our customer's intersections. Our Edge Lit LED

Illuminated Street Signs are manufactured with a reinforced aluminum enclosure for durability and can be configured for various lengths and options. The slim design reduces weight and creates an easier installation process.



## EDGE LIT ILLUMINATED SIGN

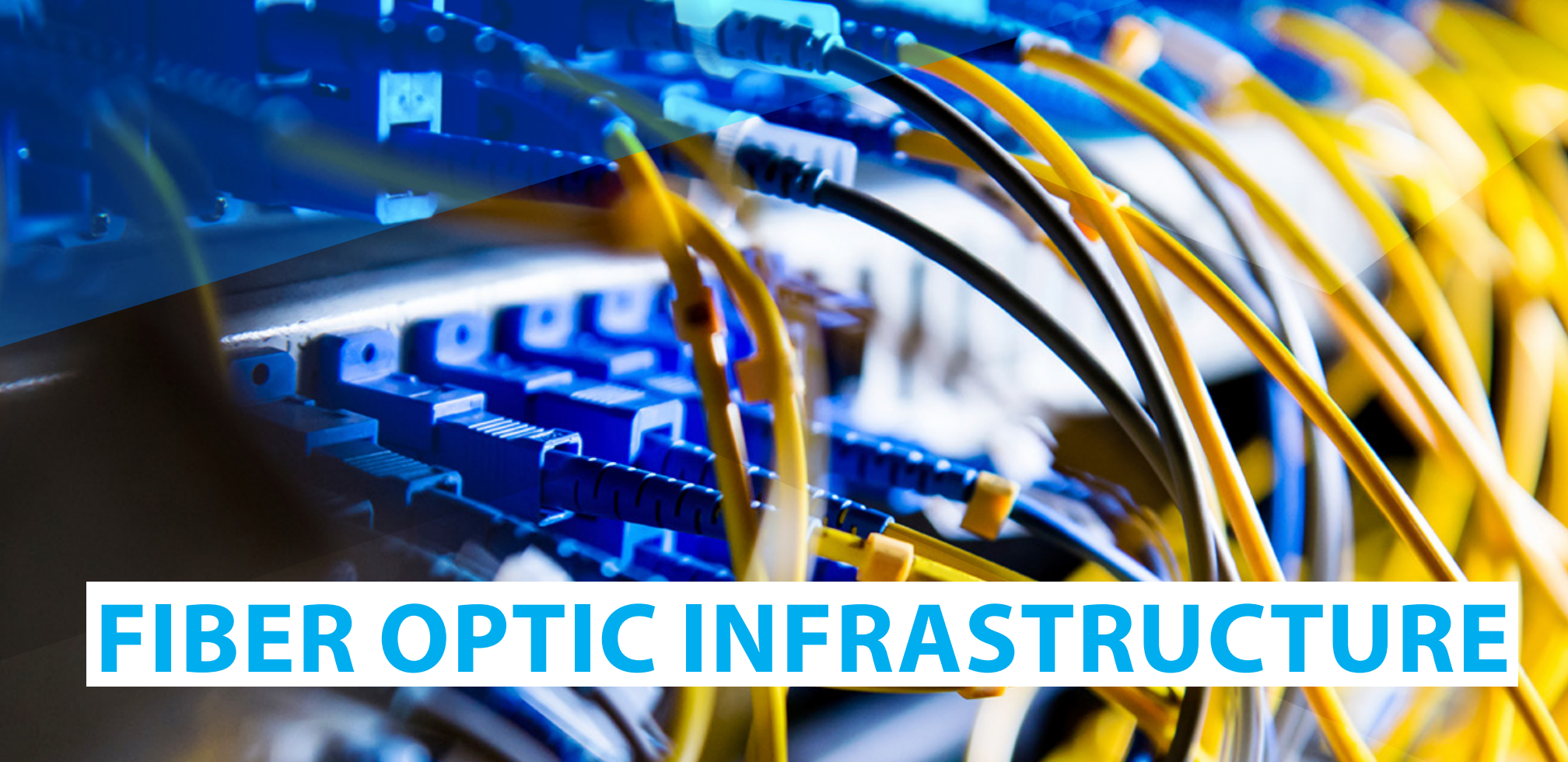
- UL Classified

The Multilink edge lit LED Illuminated Series is a reinforced aluminum enclosure designed for use in outdoor environments. Each LED illuminated overhead street sign can be configured for various lengths and options. The improved slim design reduces weight and gives a sleek look while mounted.

## GENERAL SPECIFICATIONS

<b>Dimensions</b>	Custom
<b>Material</b>	Aluminum 3M Diamond Grade DF3 Reflective Sheet
<b>Illumination</b>	Double row LED flexible light strip





# FIBER OPTIC INFRASTRUCTURE

DOME ENCLOSURES .....	38	FIBER DUCT .....	46
RACK MOUNTS .....	43	BULK FIBER .....	47
WALL MOUNTS .....	44	JUMPERS / PIGTAILS .....	48
PUSHABLE FIBER .....	45	CONNECTIVITY .....	49

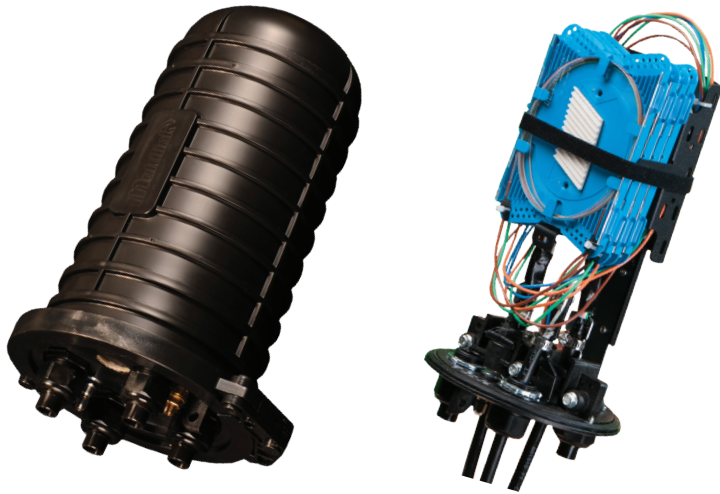
## ***FIBER OPTIC INFRASTRUCTURE***

Multilink designs and manufactures a complete line of Fiber Optic Solutions that gives our customers versatility when building their Fiber Optic infrastructure. Our Starfighter Fiber Optic Dome Splice Closures are an “all parts” inclusive hermetically sealed splice enclosures designed for ease of assembly and re-entry. Multilink’s Signature Series offers a complete line of fiber patch panel products (both wall and rack mount) for our CT-X cassette. Our SpeedFlex™ Push Fiber is a strong but flexible fiber cable designed to be

installed in rigid and flexible conduit, along with the ability to be stapled directly to the wall. Our MicroDuct™ is made out of rigid, flexible PVC offers the toughness to take any corners without damaging or bending the MicroDuct™. Our Jumpers and Pigtaills meet or exceed all industry standards and are configurable online, allowing for quick and reliable quotes from our team. Finally, our customers have the option to purchase Bulk Fiber which saves time and cuts down on inventory costs.

# DOME ENCLOSURES

## 4024-D



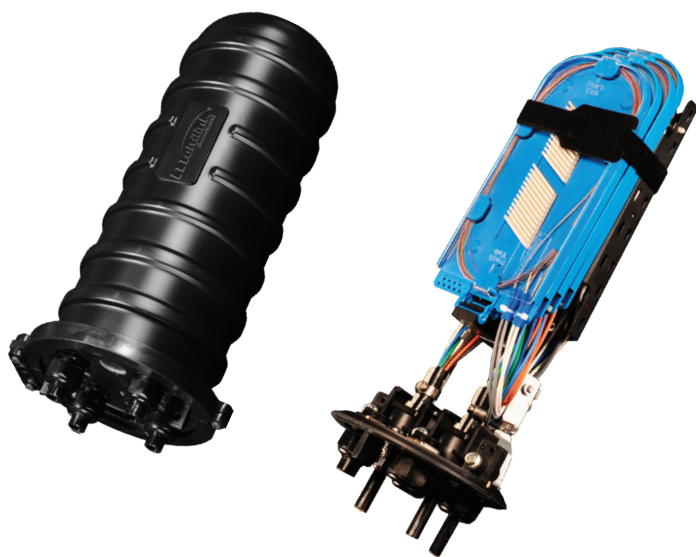
- GR-771 Compliant
- UL 50 / IP 66
- UL1863

A small capacity closure that can be used in aerial, pedestal, and underground applications. Designed for above or below grade applications. Utilizes a unique split end plate to allow midspan cable access.

### GENERAL SPECIFICATIONS

<b>Dimensions</b>	8.5" x 15.3"
<b>Material</b>	Dome - Polyethylene End Plates - Glass Filled Polypropylene V-Band - Polypropylene
<b>Cable Entrance</b>	(2) Express / Feeder ports (4) Branch or Lateral ports
<b>Splice Capacity</b>	48 Single Fusion
<b>Mounting</b>	Aerial, Pole, Vault, Ped

## 4048-D



- GR-771 Compliant
- UL 50 / IP 66
- UL1863

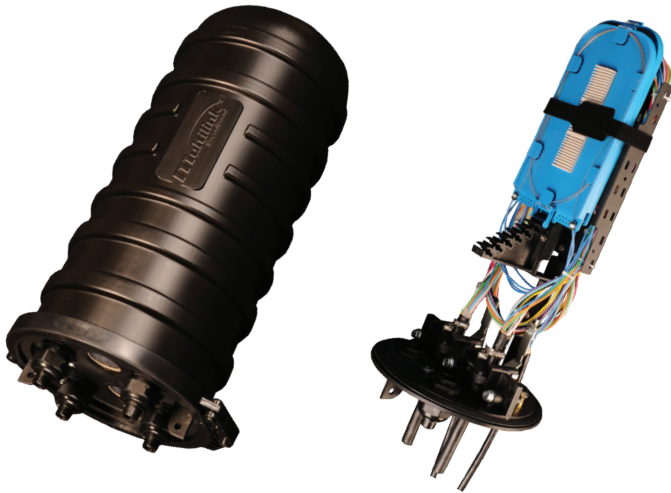
A medium capacity closure that can be used in aerial, pedestal, and underground applications. Designed for above or below grade applications. Utilizes a unique split end plate to allow midspan cable access.

### GENERAL SPECIFICATIONS

<b>Dimensions</b>	8.5" x 15.3"
<b>Material</b>	Dome - Polyethylene End Plates - Glass Filled Polypropylene V-Band - Polypropylene
<b>Cable Entrance</b>	(2) Express / Feeder ports (4) Branch or Lateral ports
<b>Splice Capacity</b>	96 Single Fusion
<b>Mounting</b>	Aerial, Pole, Vault, Ped

# DOME ENCLOSURES

## 4000-D



- GR-771 Compliant
- UL 50 / IP 66
- UL1863

Designed for above or below grade applications. Supports up to 6 or more cable entries. Utilizes a unique split end plate to allow midspan cable access. Has a splice capacity of 288 single fusion splices utilizing the 4072-SSTP splice tray.

## GENERAL SPECIFICATIONS

<b>Dimensions</b>	11.92" x 24.63"
<b>Material</b>	Dome - Polyethylene End Plates - Glass Filled Polypropylene V-Band - Polypropylene
<b>Cable Entrance</b>	(2) Express / Feeder ports (4) Branch or Lateral ports
<b>Splice Capacity</b>	288 Single Fusion
<b>Mounting</b>	Aerial, Pole, Vault, Ped



# ACCESSORIES

## 3/4" Grommets



## 1" Grommets



## GROMMETS

The Starfighter™ Dome Enclosure has an interchangeable grommet system that allows for a wide range of cable installations. Customize each grommet on your dome enclosure to fit all of your network applications needs. Grommets range from various round cables to flat drop cables.

## COMPATIBILITY GUIDE

<b>4024-D</b>	10-8088, 10-8091, 10-8085, 10-8090, 10-8084, 10-8087, 10-8092, 10-6552, 10-6550, 10-9999
<b>4048-D</b>	10-8088, 10-8091, 10-8085, 10-8090, 10-8084, 10-8087, 10-8092, 10-6552, 10-6550, 10-9999
<b>4000-D</b>	10-5552, 10-5127, 5128, 10-6552, 10-5134, 10-6002, 10-5483, 10-5129, 10-6550



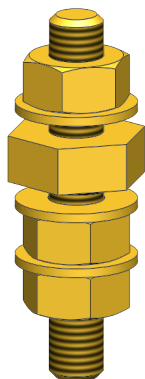


## CABLE ADDITION KIT

The cable addition kit is utilized when adding additional cables to the base of the dome enclosure. The kit includes all parts for strain relief and proper grommet sealant for each cable in the enclosure.

## COMPATIBILITY GUIDE

4024-D	10-8181
4048-D	10-8181
4000-D	10-6028

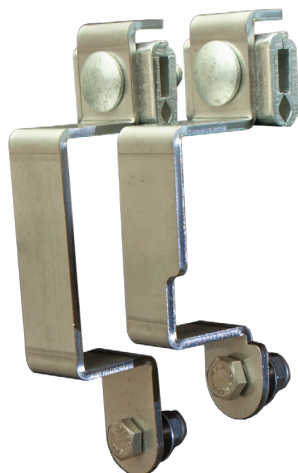


## GROUNDING KIT

The grounding kit is utilized at the base of the Dome Enclosure, providing easy grounding capabilities.

## GENERAL SPECIFICATIONS

Material	Brass
----------	-------



## **AERIAL MOUNTING KIT**

Aerial mounting kits are available for each dome enclosure, providing two strand mounting brackets.

### **GENERAL SPECIFICATIONS**

4024-D	10-8362
4048-D	10-8362
4000-D	10-5324



## **WALL/POLE MOUNTING KIT**

### **GENERAL SPECIFICATIONS**

4024-D	072-002-10
4048-D	072-001-10
4000-D	10-5335

# RACK MOUNTS



## RACK MOUNTS

The lineup of rack mounts vary from basic needs to high fiber density needs. Each rack mount can be customized to allow for any type of connector and adaptor that is needed for the application use. Each rack mount provides cable management, slide out trays and removable tops.

### GENERAL SPECIFICATIONS

<b>Dimensions</b>	Standard 19" Rack Mount
<b>Finish</b>	Polyester Powder Coated
<b>RU Size</b>	1-8 RU's

# WALL MOUNTS



## WALL MOUNTS

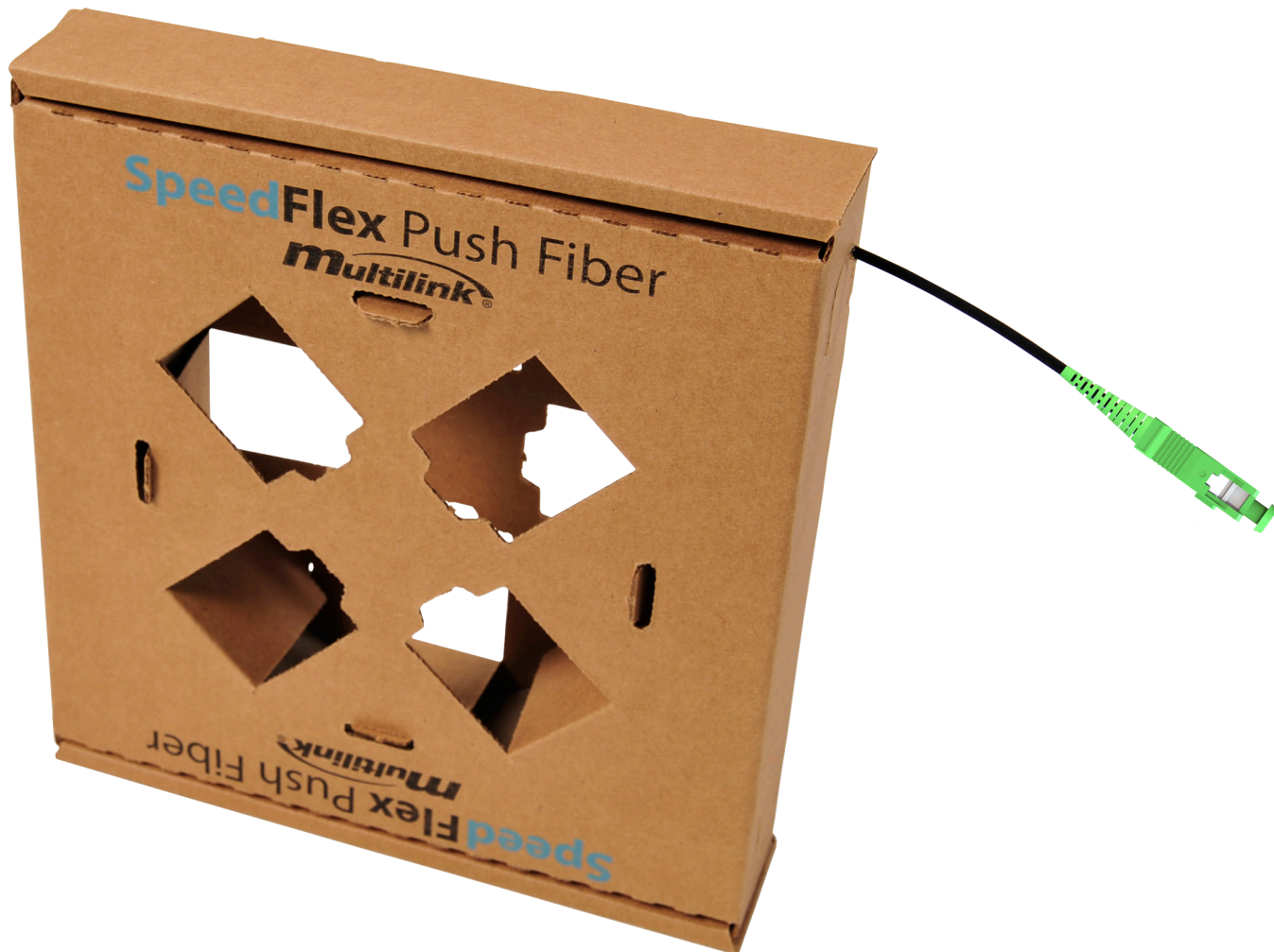
Multilink manufactures many different wall mount enclosures. Everything from basic fiber wall mounts to NEMA4 rated wall mounts that can house electronic equipment can be customized to suite your networks needs. Customize sizes, equipment and anything else associated with the cabinet to provide the proper network solution.

### GENERAL SPECIFICATIONS

<b>Dimensions</b>	Custom
<b>Finish</b>	Polyester Powder Coated, Bare, Stainless Steel
<b>Rating</b>	NEMA ratings, UL & CSA Listed enclosures



# PUSHABLE FIBER



## SPEEDFLEX™

- UL/CE Listed
- UL94
- UL 1651
- CSA C22.2 #232
- Telcordia GR20-CORE Compliant

A strong but flexible fiber cable designed to be installed in rigid and flexible conduit, along with the ability to be stapled directly to the wall. With the ability to have up to 12 fibers inside, SpeedFlex Push Fiber is unique to the push/pull fiber industry. The 900µm fiber is bend-insensitive fiber and properly color coded to EIA/TIA standards. SpeedFlex comes in a 100 ft. payout box OR 1000 ft. contractor box. SpeedFlex comes with printed measurements so you always know how much you have left. Also available with a factory terminated connector upon request. It is pushable up to 1000 ft.

## GENERAL SPECIFICATIONS

<b>Length</b>	100ft. payout box, 1,000ft. contractor box
<b>Environment</b>	Indoor / Outdoor
<b>Jacket Type</b>	UV Stabilized Rigid PVC
<b>Fiber Category</b>	Singlemode
<b>Fiber Count</b>	1 - 2



## **MICRODUCT™**

- UL94 V-0 Rated Material

Multilink's MicroDuct™ offers a wide variety of options to fit your needs. It is made out of rigid PVC . It offers the toughness to take any corners without damaging or bending the MicroDuct™. The MicroDuc™ can be ordered in custom variations. The offerings include 1-12 fibers, SpeedFlex® Push Fiber, tracer wire and pull tape. All offerings come on a reel of 1000ft in length.

## **GENERAL SPECIFICATIONS**

<b>Length</b>	1000ft.
<b>Material</b>	Rigid Flexible PVC
<b>Tracer Wire</b>	Available
<b>Bend Radius</b>	6"
<b>Flexural Strength</b>	11,000psi



# BULK FIBER



## BULK FIBER

- UL 1651
- Telcordia GR-20

Multilink offers a wide variety of bulk fiber that ranges from 1-144 count, indoor / outdoor, toneable / non-toneable, armored / non-armored and many other options. Our stocked fiber meets many industry standards and is tested for quality assurance before being shipped. Bulk fiber is also capable of being pre terminated with custom lengths in a variety of connectors.

## GENERAL SPECIFICATIONS

<b>Fiber Category</b>	Singlemode, Multimode
<b>Cable Type</b>	Round, Flat Drop, Round Drop,
<b>Construction</b>	Tight Buffer, Loose Tube

\*Specifications may vary per cable





## CUSTOM JUMPERS & PIGTAILS

- Meet or exceed GR326-CORE

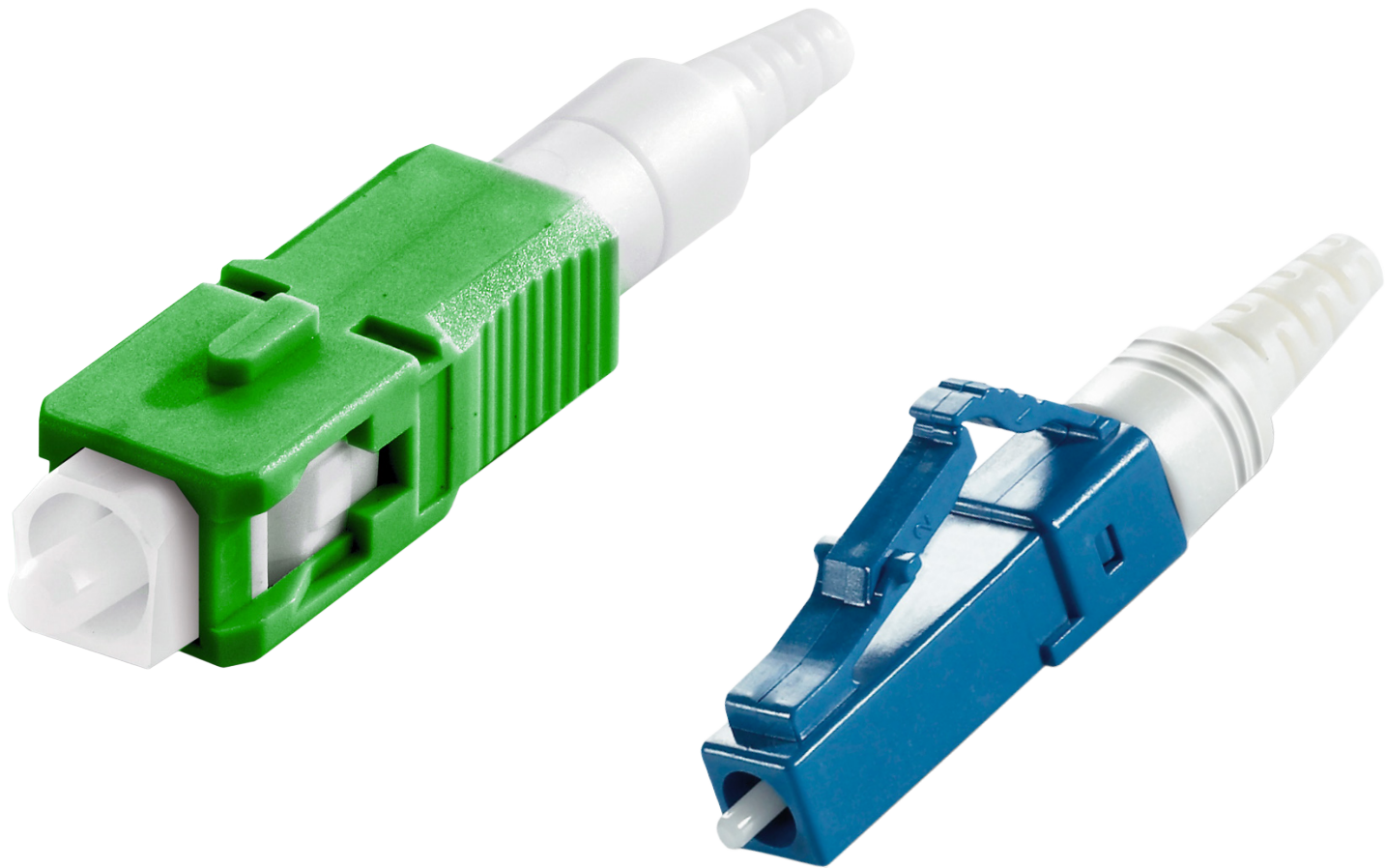
Multilink's Surelight Connectivity Solutions incorporate Telcordia compliant components and meet or exceed GR326-CORE specifications. Our manufacturing process includes using bend insensitive fiber cable and endface geometry testing. From singlemode to multimode, our online fiber configurator offers a unique way for fast and accurate turn around, allowing more productivity in a day.

### GENERAL SPECIFICATIONS

<b>Fiber Category</b>	Singlemode, Multimode
<b>Fiber Counts</b>	1 - 288 Single cable
<b>Connector Types</b>	SC, LC, ST, FC
<b>Cable Lengths</b>	Custom

\*Specifications are general and not limited to the options provided. Custom options available upon request.





## FIELD INSTALLABLES

- EIA / TIA 568-B.3

The Surelight Field Installable Connector Series are pre polished, pre assembled connectors that can be installed on the job site within two minutes. These highly reliable low loss connectors are available in Singlemode and Multimode, APC and UPC. 900µm, 2.0mm, and 3.0mm versions are available. They are reusable up to 5 times.

## GENERAL SPECIFICATIONS

<b>Connector Type</b>	SC, LC
<b>Cable Compatibility</b>	250µm/900µm, 2mm, 3mm
<b>Fiber Category</b>	Singlemode, Multimode
<b>Installation Time</b>	3-5 Minutes Typical
<b>Insertion Loss</b>	.3dB Typical
<b>Reusable</b>	Up to 5 times



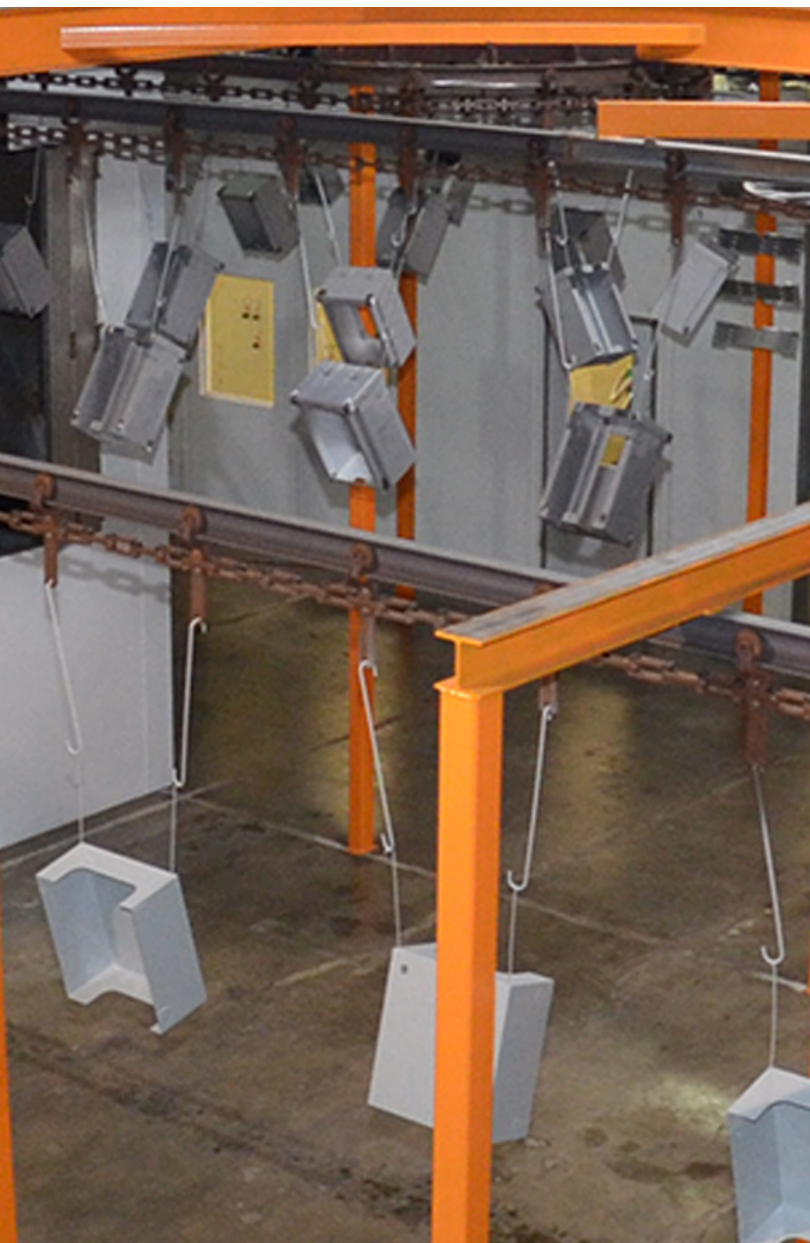
# CAPABILITIES

Multilink is proudly committed to manufacturing and assembling our products in the USA. Our capabilities cover the entire manufacturing process from start to finish. This helps reduce cost and control the high level quality that our customers have come to expect.

- SHEET METAL FABRICATION
- ELECTRONIC WELDING
- POWDER COATING
- PRODUCT ASSEMBLY
- FIBER OPTIC TERMINATION











## **MULTILINK INC.**

**Website:** [WWW.GOMULTILINK.COM](http://WWW.GOMULTILINK.COM)

**Phone:** 440.366.6966

**Location:** 580 Ternes Ln.  
Elyria, OH 44035  
USA

**email:** [engsupport@gomultilink.com](mailto:engsupport@gomultilink.com)

